



Heights Cascade

5
Bedrooms

13
Bathrooms

51,627
Lot Area



Heights Cascade

Heights Cascade

Built by Fredric March in 1934 this iconic gated tennis court estate designed by Wallace Neff has been meticulously upgraded yet has kept all the architectural integrity of a bygone era. The main house features 4 bedrooms en suite upstairs and a private exercise room. Dining room seats up to 20. Bar room with original fireplace converts to digital projector room with compliance to Bel-Air circuit list specifications customized gourmet cooking kitchen with eat-in area. Lower level includes a bar and sitting room opening to huge swimming pool and outdoor living area with fireplace. The estate includes a newly built tennis court with tennis pavilion and second story guest house. Separate gated entry on two streets. Complete and ultimate privacy. The ultimate in pedigree in Beverly Hills.

Interior

Total bedrooms	5
Total bathrooms	13
Full bathrooms	13

Area & Lot

Lot area	51,627sq.ft.
Year built	1934
Neighborhood	Beverly hills
Architecture styles	Traditional
View description	Canyon, hills, tree top

Exterior

Stories	3
---------	---



Heights Cascade



Heights Cascade











Heights Cascade



Heights Cascade



Heights Cascade





Heights Cascade



Heights Cascade



Heights Cascade



Heights Cascade



Heights Cascade





Heights Cascade



Heights Cascade





Heights Cascade



Heights Cascade



Heights Cascade



Heights Cascade



Heights Cascade



Heights Cascade



Heights Cascade



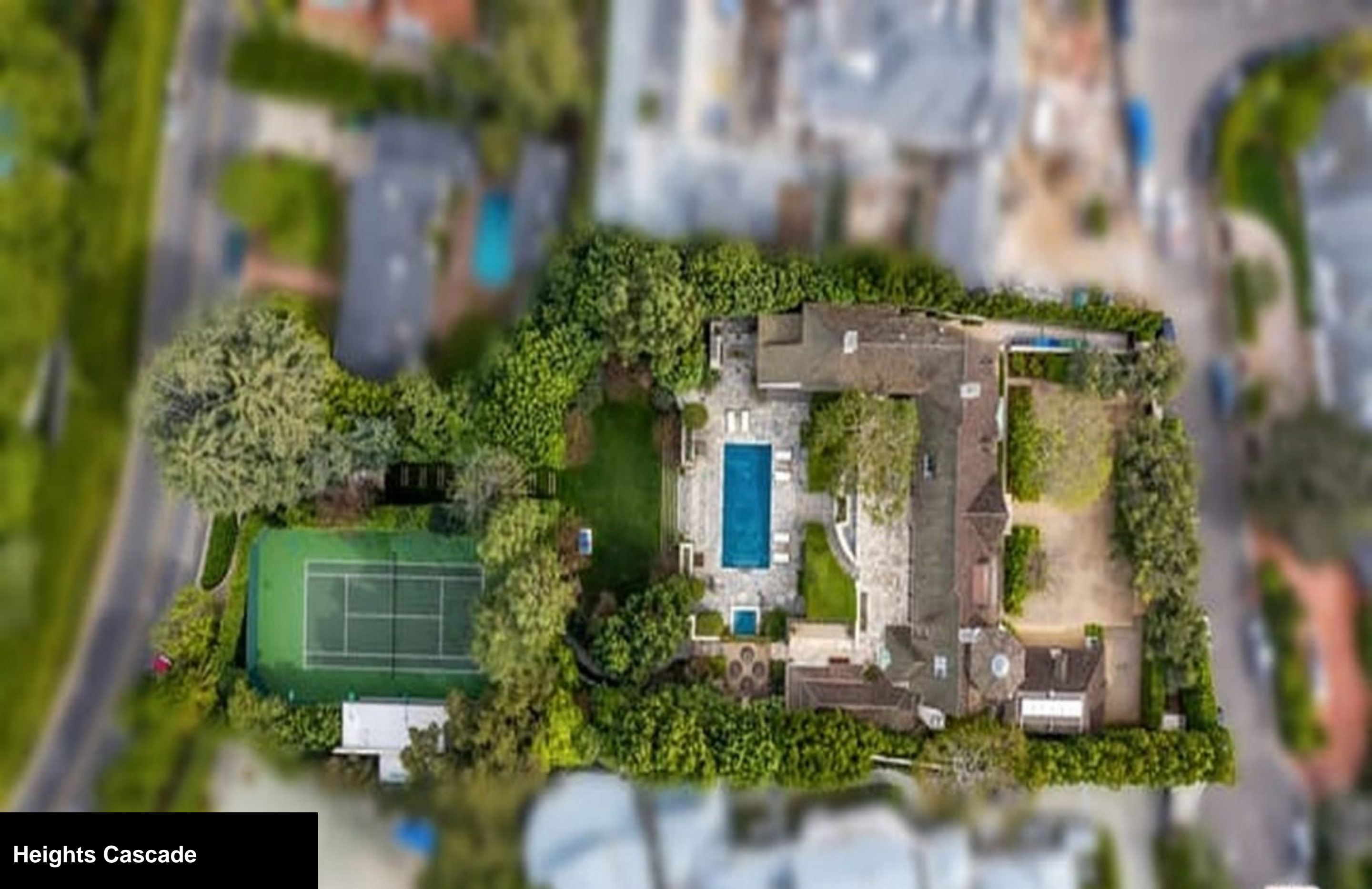
Heights Cascade



Heights Cascade



Heights Cascade



Heights Cascade

